

INTERLIFT **ILD^{plus}**

Rugged & Simple Direct Lift Designed for Reliable Operation in the Harshest Environments *plus...*

The **ILD^{plus}** is the next generation of direct lifts giving you the best value and lowest running cost *plus...*

- + European technology combined with North American manufacturing, service and support
- + The savings and increased component life of integrated power consumption reduction
- + The durability and appearance of a superior E-coat finish that is applied in an ECO friendly process

**-OPTIMIZED-
FLEXIBILITY
DURABILITY
PROFITABILITY**



State-of-the-Art Manufacturing Plant in the US



210,000 square foot facility applying efficient technologies and lean principles located outside of Omaha
Equipment used for Liftgate Production:
+ **Robotic Welding**
+ **CNC** – Turrets
– Lasers
– Press Brakes
– Roll Forming



ILD^{plus} 12 Step E-Coat Primer & Top Coat Provides Incredible Finish and Durable Corrosion Protection

All parts are cleaned in a series of four baths, then pre-treated with a phosphate conversion coating.
The lift gate is fully immersed in a PPG paint bath where direct current is applied between the steel and counter electrodes. Paint is attracted by an electric field to the lift gate until every bare steel part is covered and the field is broken.

Once painted the lift gate is rinsed to recycle any un-deposited paint, achieving nearly 100% paint efficiency for an environmentally friendly process.
After curing in the paint oven for more than an hour at 375°F, the process is finished.

ILD^{plus} STANDARD FEATURES:

- LED Lights
- Enclosed Power Pack
- Adjustable Platform Chains
- Bushings and Grease Zerks @ all Pivot Points
- Circuit Breaker
- Bottom Stops
- Volt Gauge
- Master Disconnect Switch
- Power Down on Command
- Replaceable Column Wrap
- Nylon Sliding Dock Bumpers
- Built in Pressure Gauge
- ILD 55 & ILD 66 Models have standard Dual Pump and Motor

ILD^{plus} LIFTGATE OPTIONS:

- Auxiliary Truck or Trailer Kits
- Cart Stops
- 16" aluminum Retention Ramp
- Hand Held Remote
- Dock Seal Kits
- 102" applications
- Aluminum Platforms
- Below Bed Storage
- Dual Pump and Motor (ILD35 and 44)

Model	Lifting Capacity (Lbs.)	Platform Size Height (Inches)	Platform Width (Inches)	Ramp Sizes and Style	Bed Height (inches)**	Approx. Weight (Lbs)**
ILD 35	3500	60 and 72	80, 86	12" fixed or 16" Alum. Retention	40 to 56	1720 - 1940
ILD 44	4400	60, 72 and 84	80, 86		40 to 56	1740 - 1960
ILD 55	5500	60, 72 and 84	80, 86		40 to 56	1760 - 1955
ILD 66	6600	60, 72 and 84	80, 86		40 to 56	1780 - 1975

**Depending on platform size / material and ramp configuration



ILD^{plus} Finally... a Direct Lift with a Brain

We acknowledge the fact that around 80% of liftgate problems are voltage related. The **ILD^{plus}** addresses this with incorporated **Solid State Controls** and a **Built-in Power Consumption Reduction System** realizing a battery power savings of up to 25% per cycle compared to similar operating systems.

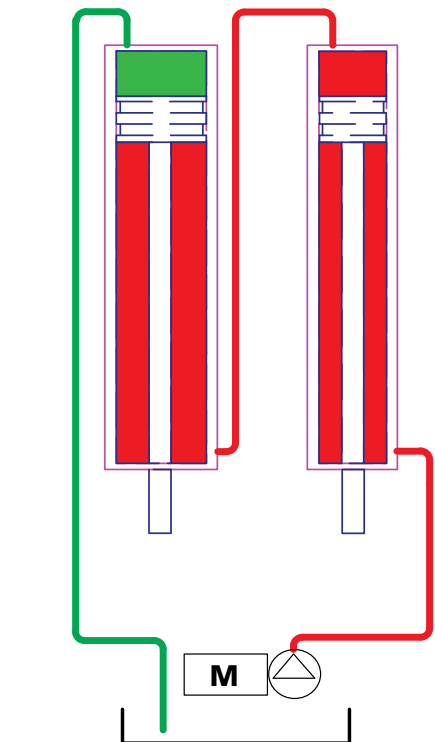
- + The **K^{plus} Control System** (new to Direct Lifts but proven in more than 50,000 MBB lifts) takes Direct Lifts to the next level in both function and reliability.
- + **Gravity or Power Down...** You decide by pressing the switch once or twice! The gravity down speed exceeds the power down speed even with a light load placed on the platform.
- + The **Secondary Motor*** is only activated on 25% of functions and the smart control system alternates between motors on the unit to increase component life.
- + With **K^{plus} Technology**, features such as built-in cycle counting, pc-connectivity trouble shooting and options like warning lights, wireless remote and lock out programs are also possible.



ILD^{plus} Heavy duty Power Pack with Added Smarts

Thermo Protection & Heavy-duty Components equals Low Running Costs:

- + The **heavy-duty steel box** enclosure complete with hanging brackets includes room for the dual pumps & up to three (3) batteries. Every unit is pre-wired and filled with multi-temp hydraulic fluid for temperatures from -50F to 150F.
- + **Oversized thermo protected heavy-duty cycle components** minimize maintenance and down time.
- + Each motor and solenoid is equipped with a designated ground as are the valve solenoids.
- + 5500 & 6600 Lbs. units are equipped with a **standard dual pump & motor power pack**, which can also be ordered as optional equipment on smaller models.
- + Standard **built in pressure & volt gauges** ensure fast diagnostics.
- + A **standard back up 3 button remote** for all functions is included in the power pack.



- **Red**
High pressure side on up-function
- **Green**
Low pressure return on up-function
- **Green-Red**
Low pressure, Low Amperage side only on power down on command

ILD^{plus} Simple Series Hydraulics

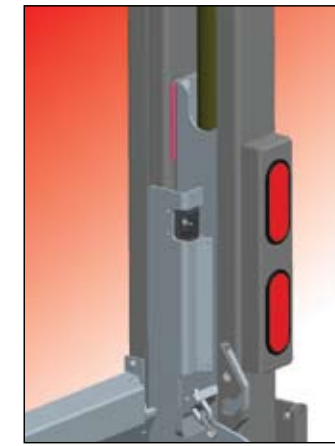
- + **Low Electric Power Consumption**
- + **No Leveling Valve - Zero Adjustments**
- + **Self Leveling & Always Synchronized**

ILD^{plus} More Efficient Parts Keep Cost Low & Value High



Every **Pivot point** on the **ILD^{plus}** has low maintenance bushings together with a grease zerker.

High tensile strength & corrosion treated pins are used throughout the **ILD^{plus}** for superior wear.



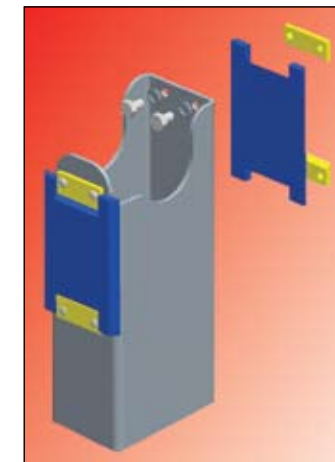
Inside Molded Switch with Heavy-Duty Guard

The inside switch harness is routed and well protected throughout the operation.

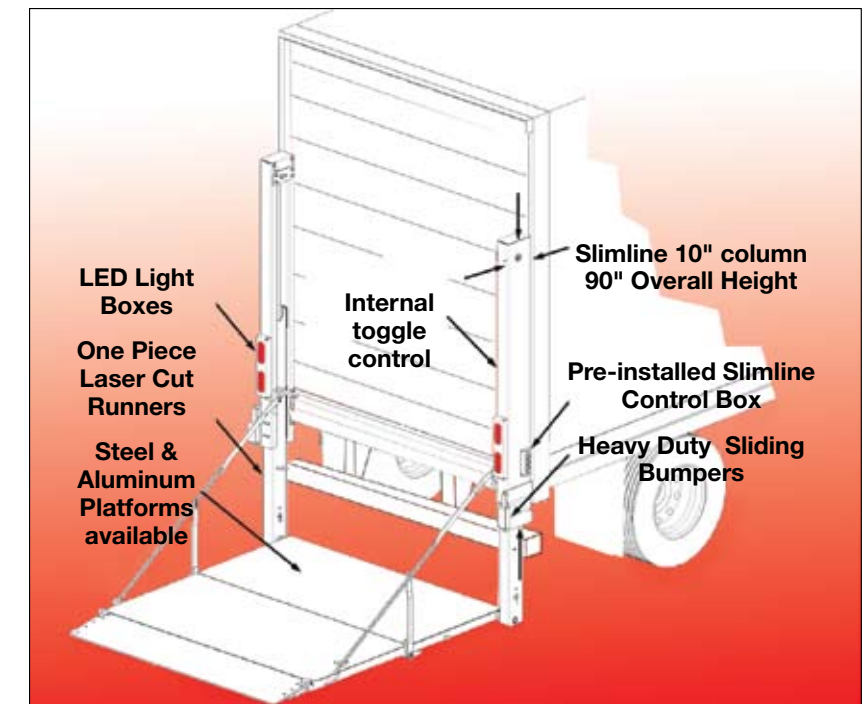
The platform latch holds the platform tight during transport.



The **Universal Slide Pads** are clipped in place and guaranteed for life.



Runners are built using latest technology tube laser for greater precision and reliability.



* The **ILD^{plus}** 5500 and 6600 lbs. models are equipped with standard dual pump & motor. The 3500 and 4400 **ILD^{plus}** have a standard single pump & motor with an optional secondary unit offered.